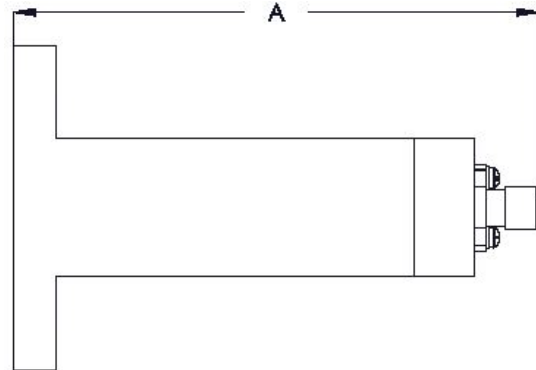


Waveguide to Coaxial End Launch Adapter Description

- Operating Frequency 3.95 – 50.00 GHz
- High Power Handling
- Dimension "A" for SMA/2.92mm female connectors
- Male or Female Connectors
- Waveguide is Standard Material Aluminum
- Finish: High Temperature Flat Black*



Waveguide Flanges:

1. Cover
2. Choke
3. CPRF
4. CPRG
5. CMR
6. Cover Grooved
7. CAR
8. PAR
9. UAR
10. CBR
11. PBR
12. UBR
13. UDR
14. RDR
15. PDR

Special Flange List As: FSXX

Part number Example: 3454-N-1

P/N	Connector	Flange
3462	NF	1

WR137 with Type N Female Connectors and Cover Flange

*Other designs and finishes available upon request

P/N	WR SIZE	FREQ. (GHz)	Dim "A" (In)	MAX VSWR
3456	42	18.00 - 26.50	1.68	1.25:1
3457	62	12.40 - 18.00	1.93	1.20:1
3458	75	10.00 - 15.00	2.18	1.20:1
3459	90	8.20 - 12.40	2.98	1.20:1
3460	102	7.00 - 11.00	3.10	1.20:1
3461	112	7.05 - 10.00	3.04	1.20:1
3462	137	5.85 - 8.20	3.27	1.20:1
3463	159	4.90 - 7.05	3.77	1.20:1
3464	187	3.95 - 5.85	4.38	1.20:1

Connectors: Add- F for Female or M for Male

- N = Type N
- S = SMA
- K = K Connector (2.92 mm)
- 2.4 = 2.4 mm Connector
- TNC = TNC connector
- SC = SC Connector
- X = Special