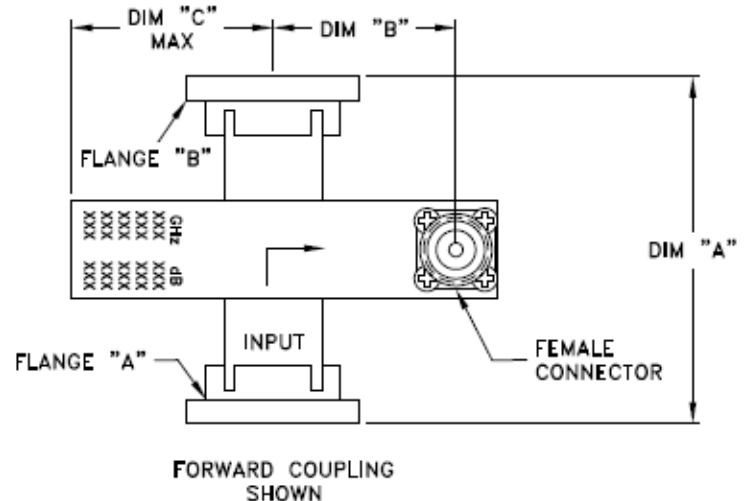


Coupler Crossguide Description

- Operating Frequency 1.70 – 50.00 GHz (Specify)
- VSWR 1.10:1 Max (waveguide), 1.25:1 max (coax)
- Coupling 30, 40 or 50 dB Typical
- Directivity 25 dB min
- Numerous Connectors Available
- Waveguide is Aluminum (6061) or Copper/Brass
- Numerous Flange Configurations Available
- Pressurization 5 PSIG
- High Temperature Flat Black Finish*
- RoHS Compliant



Waveguide Flanges:

1. Cover
2. Choke
3. CPRF
4. CPRG
5. CMR
6. Cover Grooved
7. CAR
8. PAR
9. UAR
10. CBR
11. PBR
12. UBR
13. UDR
14. RDR
15. PDR

Connectors:

- N = Type N Female
 S = SMA Female
 K = K Connector (2.92mm)
 Y = 2.4mm Connector
 X = Special

P/N	WR SIZE	FREQ. (GHz)	DIM "A"	DIM "B"	DIM "C"
	22	33.00 - 50.00			
2706-	28	26.50 - 40.00	2.00	1.00	2.0
3448-	34	22.00 - 33.00	2.50	1.00	2.5
2710-	42	18.00 - 26.50	3.00	1.00	3.0
3526-	51	15.00 - 22.00	3.00	1.25	2.6
2512-	62	12.40 - 18.00	3.00	1.57	1.8
2135-	75	10.00 - 15.00	3.00	1.59	1.8
2665-	90	8.20 - 12.40	3.50	1.41	2.1
4097	102	7.00 - 11.00	4.00	1.50	3.00
2100-	112	7.05 - 10.00	5.00	1.83	3.4
2119-	137	5.85 - 8.20	6.00	2.24	3.4
2170-	159	4.90 - 7.05	4.00	1.89	3.2
2641-	187	3.95 - 5.85	6.00	1.32	3.1
2254-	229	3.30 - 4.90	6.00	2.23	4.5
4098	284	2.60 - 3.95	7.00	2.50	6.13
2520-	340	2.10 - 3.00	8.50	3.74	12.7
3628-	430	1.70 - 2.60	9.00	4.00	13.2

Part Number Example: 2512-30NF-1-2

P/N	Coupling Value	Conn. Coupled Port	F-Forward R-Reverse	Flange "A"	Flange "B"
2512	30	N	F	1	2

*Other finishes available upon request

Data Sheet Crossguide Coupler r1